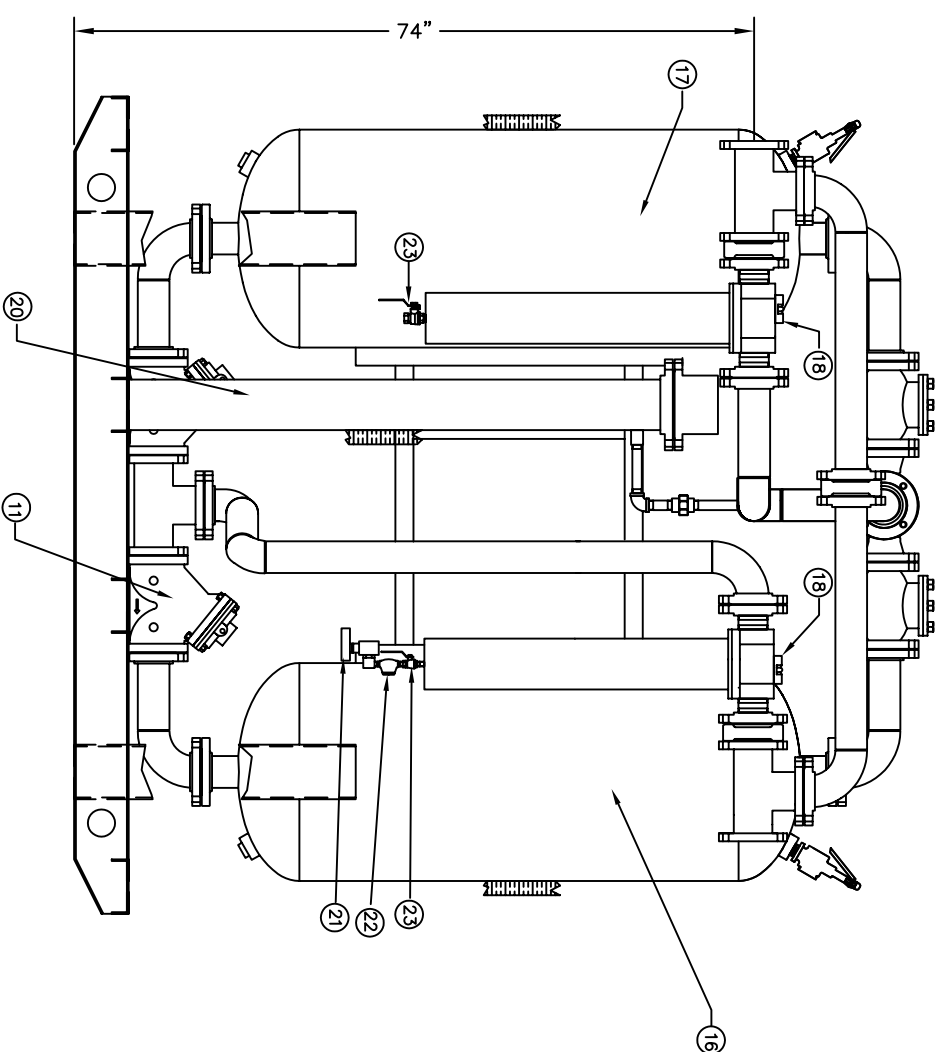
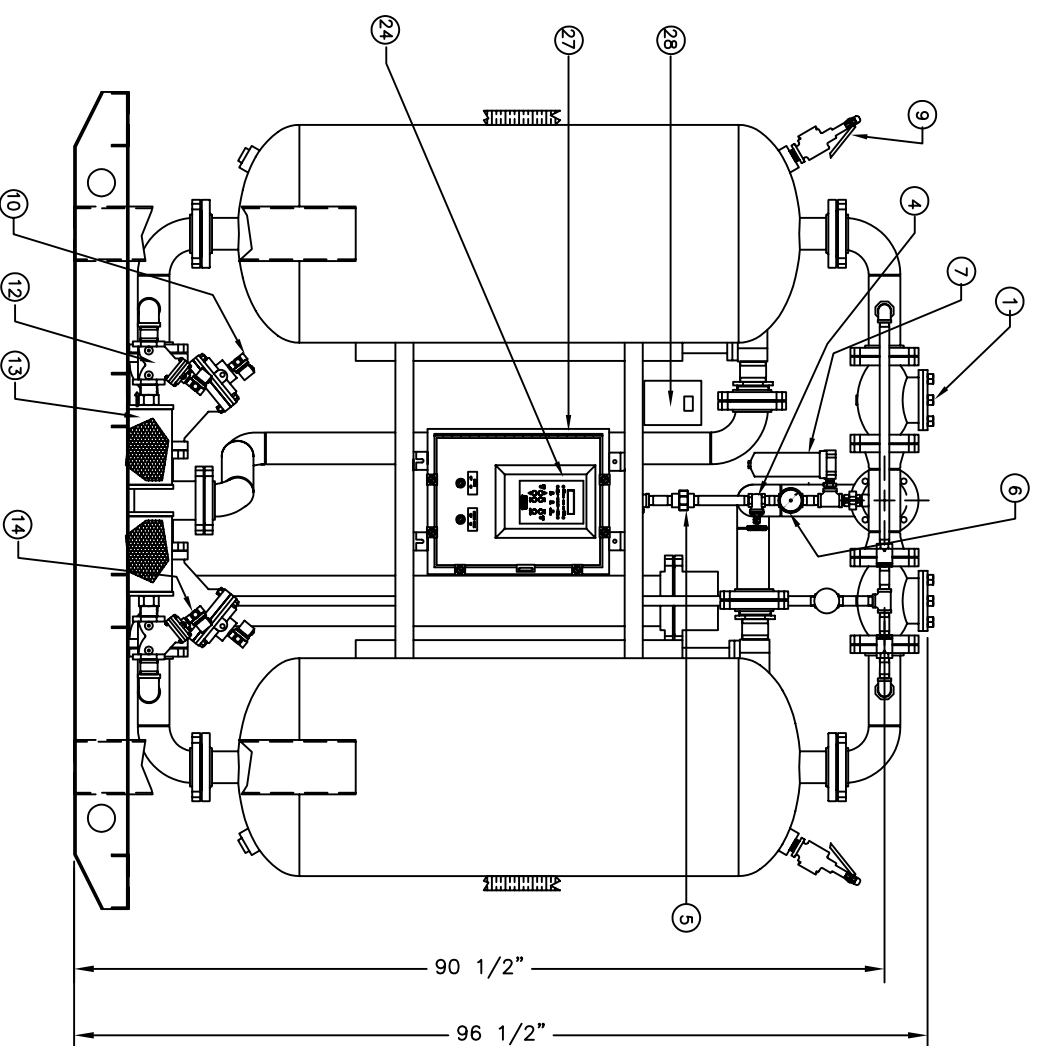
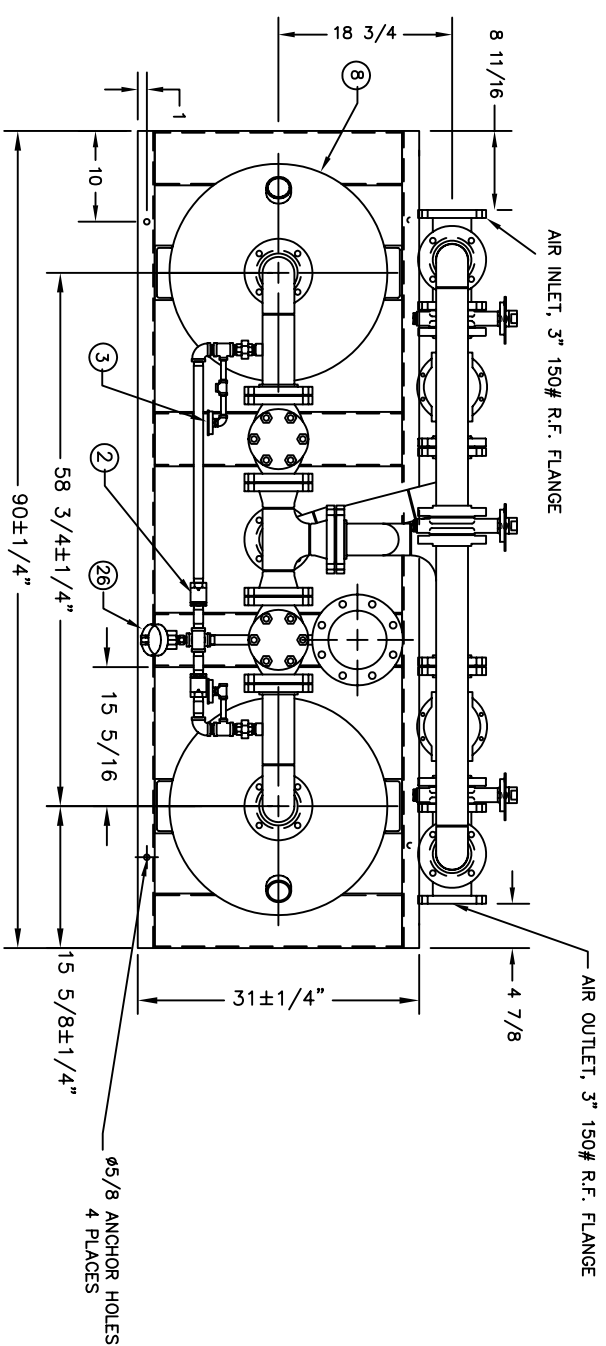


REVISION		
REV.	DESCRIPTION	DATE
A	?	?



ITEM	QTY	DESCRIPTION
1	2	3" FLG. OUTLET CHECK VALVE
2	2	3/4" NPT PURGE CHECK VALVE
3	2	1/4" NPT TOWER PRESSURE GAUGE (0-200 psig)
4	1	3/4" NPT PURGE ADJUSTMENT GATE VALVE
5	1	3/4" NPT PURGE ORIFICE UNION
6	1	1/4" NPT PURGE PRESSURE GAUGE (0-200 psig)
7	1	1/2" NPT CONTROL AIR FILTER (HOUSING ONLY)
8	2	EPSTOD CONTROL FILTER ELEMENT
9	2	1" NPT PRESSURE RELIEF VALVE
10	2	1/4" NPT 3-WAY PURGE INLET PILOT SOLENOID VALVE, NEMA 4
11	2	3" FLG INLET HIGH TEMP AQUAMATIC VALVE
12	2	1 1/2" NPT PURGE EXHAUST HIGH TEMP AQUAMATIC VALVE
13	2	1 1/2" NPT PURGE EXHAUST PILOT SOLENOID VALVE, NEMA 4
14	2	1/4" NPT 3-WAY PURGE EXHAUST MUFFLER
15	3	3" WATER STYLE BUTTERFLY BLOCK AND BYPASS VALVE
16	1	2 1/2" NPT CS1050 COALESCER FILTER
17	1	2 1/2" NPT PS1300 PARTICULATE FILTER (HIGH TEMP ELEMENT)
18	2	DIFFER. PRESSURE INDICATOR (ON FILTERS)
19	2	TOWER PRESSURE SWITCH (INSIDE ENCLOSURE)
20	1	16 KW HEATER 5" FLANGE 460V-3ph-60hz, NEMA 4
21	1	1/4" AUTOMATIC DRAIN PLUS TIMER
22	1	1/4" NPT Y-STRAINER
23	2	1/4" NPT BALL VALVE
24	1	PHE CONTROL PANEL
26	1	J-TYPE THEROCOUPLE
27	1	ELECTRICAL ENCLOSURE, NEMA 4
28	1	DEW POINT METER

- NOTES:
1. ALL DIMENSIONS ARE IN INCHES.
  2. MANUFACTURING TOLERANCES  $\pm 1/4"$
  3. DESICCANT TOWERS TO BE ASME CODED PER SEC.-VIII, DIV.-1
  4. QUANTITY : 800 LBS PER TOWER (SHIPPED SEPARATELY)
  5. TOTAL SHIPPING WEIGHT : 5000 LBS
  6. OPERATING SPEC.:  
AIR CAPACITY : 1000 SCFM  
AIR INLET CONDITIONS : 100F, 125 PSIG  
MAX. DESIGN PRESSURE : 150 PSIG  
MAX. DESIGN TEMP. (DESICCANT TOWER): 450F
  7. FILTER MEDIA : GLASS MICRO FIBER, 99.97%, 0.3  $\mu$  (ABS)  
CELLULOSE & SYNTHETIC MICROFIBER, 0.9  $\mu$  (ABS)  
PARTICULATE : 98% EFF. @ 0.3  $\mu$
  8. HIGH DEWPOINT ALARM IS AN OPTIONAL FEATURE.  
NOT ACTIVE IN THIS DRYER.  
9. DESICCANT TOWERS AND HEATER WILL HAVE FIBER GLASS INSULATION AND ALUMINUM JACKETING.

**TYPICAL**

DRAWN BY:	DATE:	CHECKED BY:	DATE:	APPROVAL BY:	DATE:
R.SULAIMAN	4/18/00				
MEDIA:	AIR	VOLTAGE:	460-3-60	CAPACITY:	1000 SCFM
DESIGN PRESSURE:	150 PSIG	DESIGN TEMPERATURE:	150 F		
OPERATING PRESSURE:	125 PSIG	OPERATING TEMPERATURE:	450 F		
MANUFACTURING TOLERANCE:	$\pm 1/4"$	APPROX. SHIP WEIGHT:	5000 LBS	SCALE:	
DIMENSIONS $\pm 1/4"$	ALL DIMENSIONS ARE IN INCHES				

CUSTOMER:		PHE1000 B.A.S.	
SOLD TO:		GENERAL LAYOUT	
SHIP TO:		DRAWING NUMBER	
P.O. NUMBER:		REV	
PIONEER INFO ONLY: ?		QTY	
		SHEET	

**PIONEER**  
AIR SYSTEMS, INC.  
WARTBURG, TN, USA 1997