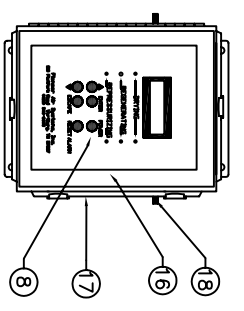
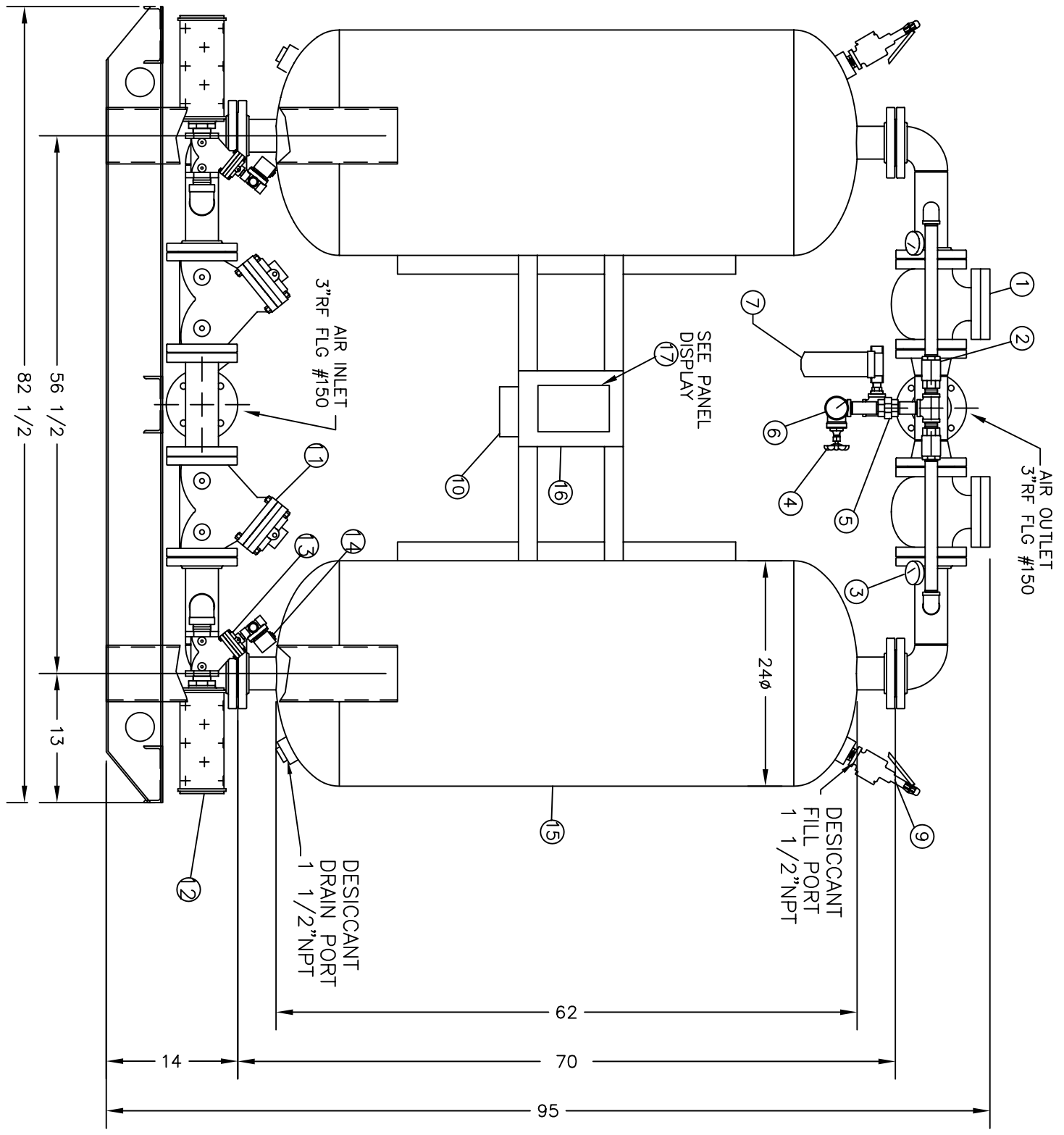


SYM	QTY	DESCRIPTION	PART NUMBER
1	2	3" FLG OUTLET CHECK VALVE	B8-00070-52088
2	2	1" PURGE CHECK VALVE	B8-00070-52079
3	2	TOWER PRESSURE GAUGE (0-200 psig)	D2-00010-15015
4	1	PURGE ADJUSTMENT VALVE	B8-00040-52054
5	1	PURGE ORIFICE UNION	A2-00100-44260
6	1	PURGE PRESSURE GAUGE (0-200 psig)	D2-00010-15015
7	1	CONTROL AIR FILTER, PS150 (ELEMENT)	A7-00010-41150
8	1	POWER ON SWITCH	B8-00100-00035/36
9	2	PRESSURE RELIEF VALVE SET @150 PSIG	B7-00010-43310
10	1	TOWER SELECTOR VALVE	Z1-B8080-08401
11	2	230VAC-50HZ COIL VOLTAGE	B8-00010-45015
12	2	3" FLG INLET VALVE	B6-00010-43017
13	2	PURGE EXHAUST MUFFLER	B8-00010-45007
14	2	PURGE EXHAUST VALVE	Z1-B8080-00084
15	2	PURGE EXHAUST PILOT VALVE	A3-00010-41010
16	1	230VAC-50HZ COIL VOLTAGE	A8-00204-10085
17	1	PHL TANKS (ASME)	C9-00020-30081
18	2	ELECTRICAL ENCLOSURE, NEMA-4	D2-00020-15070
		PHL CONTROL PANEL	
		PRESSURE SWITCH (NOT SHOWN)	

- NOTES:
- DESICCANT TOWERS TO BE ASME CODED PER SEC-VIII, DIV.-1
 - DESICCANT USED : 3/16"DIA ACTIVATED ALUMINA, QUANTITY : 440 LBS PER TOWER
 - FILTER MEDIA : CELLULOSE & SYNTHETIC MICROFIBER, 0.9 µ(ABS) 98% EFF. @ 0.5 µ



PANEL DISPLAY



DRAWN BY:	J. GREEN	DATE:	10-07-97	CHECKED BY:		DATE:		APPROVAL BY:		DATE:	
MEDIA:	COMPRESSOR AIR	VOLTAGE:	115/230 V	CAPACITY:	800 SCFM	DESIGN TEMPERATURE:	100 DEG. F. (DESICCANT VESSEL ONLY)				
DESIGN PRESSURE:	150 PSIG	OPERATING PRESSURE:	100 PSIG	OPERATING TEMPERATURE:	100 °F	MANUFACTURING TOLERANCE:	±1/4" ALL DIMENSIONS ARE IN INCHES				
						APPROX. SHIP WEIGHT:	3600 LBS.	SCALE:	N.I.S.		
UNAUTHORIZED USE, MANUFACTURE OR REPRODUCTION IN WHOLE OR IN PART IS PROHIBITED. DRAWING DESIGN OR OTHER DISCLOSURES PROPERTY OF PIONEER AIR SYSTEMS, INC.											

PIONEER
AIR SYSTEMS, INC.
 WARTBURG, TN, USA 1997
PHL800
 GENERAL ARRANGEMENT DRAWING
 CUSTOMER: -
 P.O. NUMBER: PHL800
 DRAWING NUMBER: PHL800
 REV: 1
 QTY: 1
 SHEET: 1 OF 1
 PIONEER INFO ONLY: ?